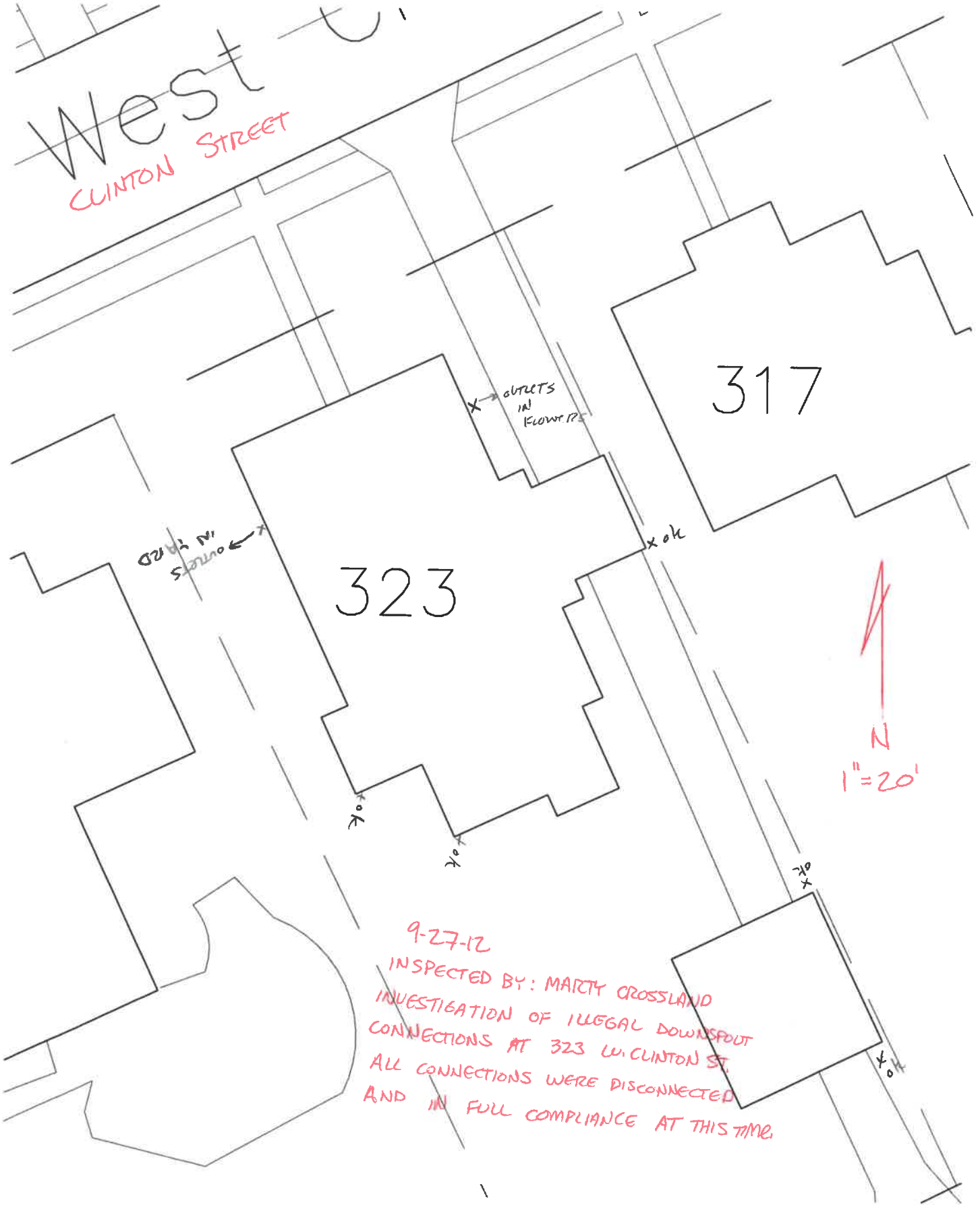


West
CLINTON STREET



323

317

OUTLETS
IN
FLOWERS

OUTLETS
IN
YARD

N
1" = 20'

9-27-12
INSPECTED BY: MARTY CROSSLAND
INVESTIGATION OF ILLEGAL DOWNSPOUT
CONNECTIONS AT 323 W. CLINTON ST.
ALL CONNECTIONS WERE DISCONNECTED
AND IN FULL COMPLIANCE AT THIS TIME